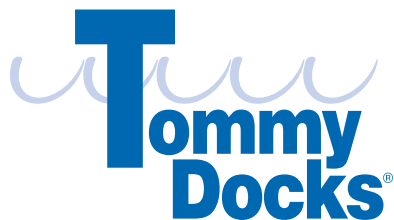


*Your Dream Dock Starts Here
Easy To Build...Ready To Enjoy!*

Aluminum Dock Frame Assembly Instructions

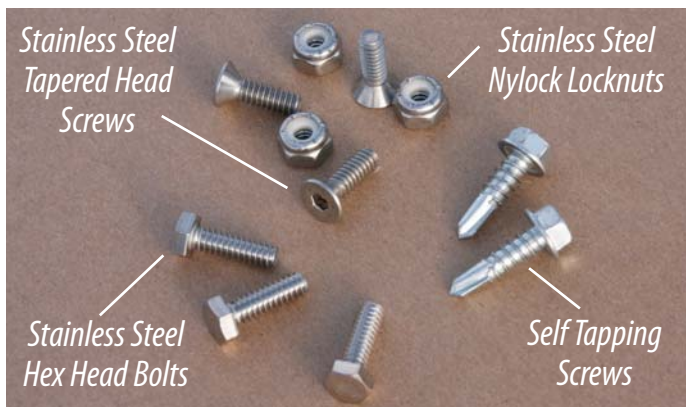
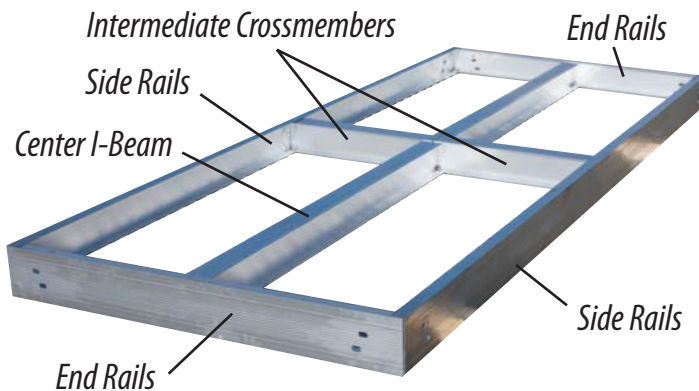


PO Box 1449
Wausau, WI 54402
715-842-3804
www.tommydocks.com

Aluminum Frame Assembly Instructions

PARTS INCLUDED IN THIS KIT

- (2) 48" End Rails
- (2) 96" or 120" Side Rails
- (1) 96" or 120" Center I-Beam
- (2) 23⁷/₈" Intermediate Crossmembers
- (20) Stainless Steel Tapered Head Screws and Stainless Steel Nylock Locknuts for the top side of the frame
- (20) Stainless Steel Hex Head Bolts and Stainless Steel Nylock Locknuts for the bottom side of the frame
- (2) Self Tapping Screws for frame assembly with slide in deck boards *(these are not needed if you plan to use removable drop-in deck panels or tongue and groove decking)*



TOOLS NEEDED TO ASSEMBLE THE FRAME

- ³/₈" Box end wrench
- ⁵/₁₆" Box end wrench or ⁵/₁₆" bit for powertool
- ¹/₈" Allen wrench or ¹/₈" bit for powertool



Start by sliding the (2) Side Rails into one of the End Rails as shown.



As shown in this illustration, the End Rail fits in between the flanges on the Side Rail.



Insert the Tapered Head Stainless Steel Screws at the corners (2 screws per corner) and hand tighten the Stainless Steel Locknuts to all (4) corner screws at the top side of the frame as shown.

Step 4



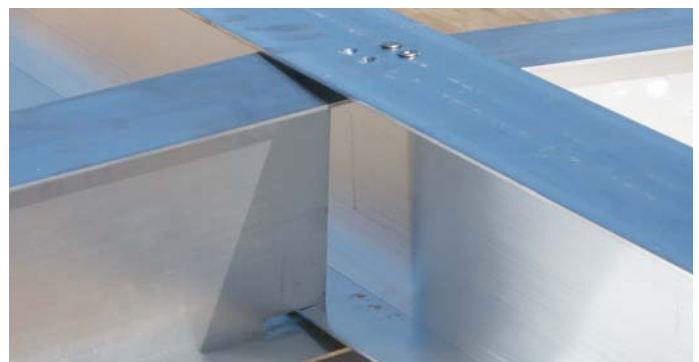
Insert the center I-Beam into the End Rail as shown. The top flange of the I-Beam goes on top of the End Rail and the bottom flange of the I-Beam sits on top of the bottom flange of the End Rail as in first picture in this step. Insert the screws and locknuts and hand tighten.

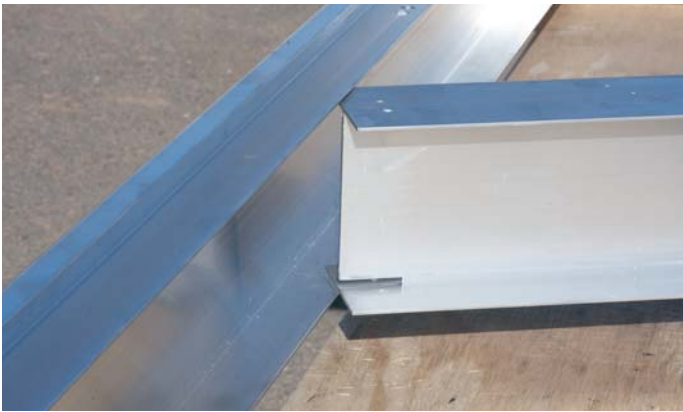
Step 5



Install one Intermediate Crossmember I-Beam into the Side Rail, attach with the screws and locknuts and hand tighten. Notice that the Intermediate Crossmember fits in between the flanges on the Side Rails but not where it attaches to the center I-Beam.

Step 6





This illustration shows the attachment of the Intermediate Crossmembers to the center I-Beam of the frame. Notice that the bottom flange of this Crossmember fits underneath the bottom flange of the center I-Beam. Insert the screws and lock nuts and hand tighten. Attach the second Crossmember in the same manner as the first, but do not install the screws into this side rail yet. Continue to next step.





You now have all the frame components attached to the frame except the last End Rail. Make sure all of the connections are fitted tightly and tighten all of the screws you have installed so far on the top side of the frame.



Step 8

This illustration shows the remaining connection of the Crossmember into the Side Rail that remains unattached. The purpose for this is to allow room to slide individual boards into place in the forward section of the frame. *(If you are planning on making removable drop in deck panels for the frame you can disregard this step and install the screws and tighten this connection to the Side Rail.)*



Step 9





This illustration shows the installation of individual deck boards into the first half of the frame. (*Disregard this step and the next step if you will be making removable deck panels.*) Once you are at the halfway point, install and tighten the (2) screws that attach the remaining Crossmember to the Side Rail.



This illustration shows the process of sliding the remaining deck boards into the frame.

Step 11



This illustration shows fitting one end of the remaining End Rail into the Side Rail. Install the (2) screws and locknuts into this connection and hand tighten.

Step 12



This illustration shows the process of attaching the center I-Beam to the remaining End Rail and installing the (2) screws and locknuts. Then hand tighten.

Step 13



Tighten the corner connection first and then the remaining connection to the Center I-Beam.

Step 14



Step 15



You may now push the remaining corner together and flip the frame over to put the remainder of the fasteners into the frame.

Step 16



Slide the last board into the frame and you will be able to flex the remaining corner connection to snap in the last deck board.



The final top of the frame corner connection is made by installing the (2) Self Tapping Screws provided. Fit corner together tightly and tighten.



Step 17



Install the Stainless Steel Hex Head Bolts and locknuts into the bottom half of the frame and tighten.

